

# Current Sensors with Relay: 0-5VDC Analog Output

## Load Trending And Control Relay In One Package



H932

### DESCRIPTION

The Hawkeye 932 and H952 Series provide accurate load trending information with a proportional 0-5VDC output signal. This feature combined with an integrated command relay makes these products ideal for start/stop and status monitoring of motors.

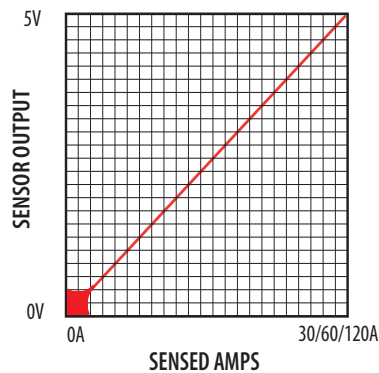
The relay is fully isolated from the current sensor, and all relay connections are externally available for maximum flexibility.

### APPLICATIONS

- Load trending
- Motor control
- Fan/Pump status

#### H932/952 LINEAR OUTPUT

Scale software as shown



\*Factory calibrated ranges selected with the amperage range switch

### FEATURES

- Self-powered analog current sensor with integral start/stop command relay
- Reduces the number of installed components... saves time and space
- Self-gripping split-core for fast retrofit installation...no need to remove conductor
- One device to install for start/stop and status...reduces installation charges
- No external power required for current sensor
- Selectable factory calibrated ranges up to 120A for increased flexibility and resolution
- Factory calibrated switch-selectable ranges (30/60/120A) for high resolution and installation ease
- No jumpers on unit...reduces installation error
- Removable mounting bracket for installation flexibility
- Bracket can be installed in three different configurations...added flexibility
- Command relay switches up to 5A@250VAC
- 5-year warranty



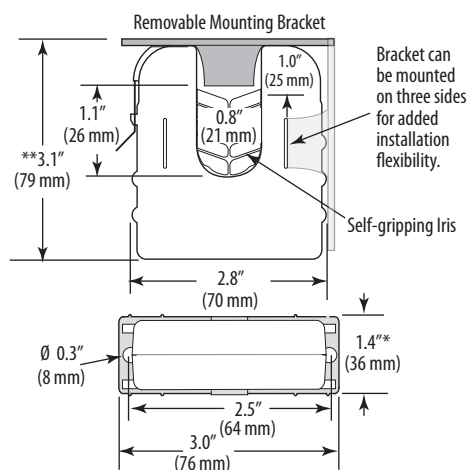
### SPECIFICATIONS



Sensor Power	Induced from monitored conductor
Insulation Class	600VAC RMS
Frequency Range	50/60 Hz nominal
Temperature Range	-15° to 60°C (5° to 140°F)
Humidity Range	10-90% RH non-condensing
Accuracy	±2% F.S. from 10% to 100% (selected range)
Response Time	2 sec.
Terminal Block Wire Size	24-14 AWG (0.2 to 2.1 mm <sup>2</sup> )
Terminal Block Torque	3.5 to 4.4 in-lbs (0.4 to 0.5 N-m)
Agency Approvals	UL 508 open device listing; CE: EN61010-1:2001-2, CAT III, pollution degree 2, basic insulation

## DIMENSIONAL DRAWING

### H932/H952



\* Terminal block may extend up to 1/8" over the height dimensions shown.

\*\* Slide switch may extend up to 1/4" over the height dimensions shown

### RELAY CONTACT RATINGS (N.O.)

Resistive..... 5A@250VAC

5A@30VDC

Inductive..... 2A@250VAC

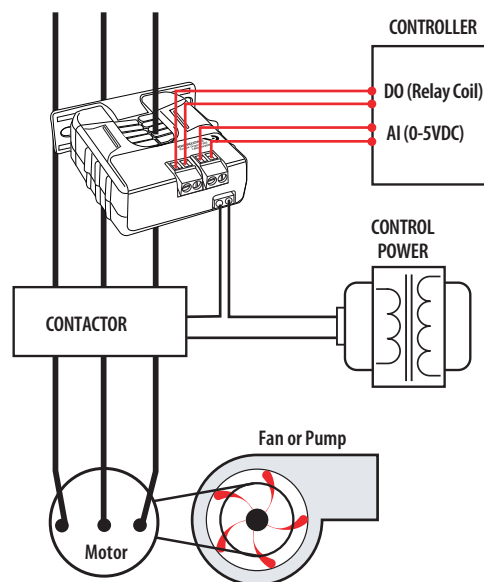
2A@30VDC

### TYPICAL COIL PERFORMANCE

Voltage	AC	DC
24 .....	15mA	15mA
12 .....		20mA
<b>Pull In Voltage (H952 only)</b>		
12VDC .....		8.4VDC
<b>Drop Out Voltage (H952 only)</b>		
12VDC .....		3.0VDC

## APPLICATION/WIRING DIAGRAM

### Trending & Controlling Motor Loads with the Hawkeye 932



## ORDERING INFORMATION



MODEL	AMPERAGE RANGE	SENSOR OUTPUT	RELAY TYPE	RELAY COIL	HOUSING	UL
H932	0 - 30/60/120A	0 - 5VDC	SPST, N.O.	24VAC/DC	Split-core	●
H952				12VDC		●

### ACCESSORIES

DIN Rail Clip Set (AH01)

DIN Rail (AV01) and DIN Stop Clip (AV02)

