



2000

REMOTE MONITORING WITH DATA LOGGING
FOR MULTIPLE SITES

SENSAPHONE®
REMOTE MONITORING SOLUTIONS

The Sensaphone 2000 Combines Advanced Remote Monitoring With The Most Flexible Dialout Capabilities

A CRITICAL TOOL THAT KEEPS YOU INFORMED ABOUT YOUR PROCESS EQUIPMENT 24 HOURS A DAY

Each Sensaphone 2000 can monitor and report on up to 8 remote, analog or digital inputs; and it can send those reports to as many as 32 locations. The information it collects is organized into easy-to-read reports and delivered wherever you want it, whenever you need it. Sensaphone 2000 saves you valuable time and keeps you aware of important functions and activities.

An essential tool for environmental monitoring in a variety of applications, Sensaphone 2000 supplies the critical information needed to prevent costly problems and maintain peak performance at virtually any kind of industrial facility. If you need to know, you need Sensaphone 2000!

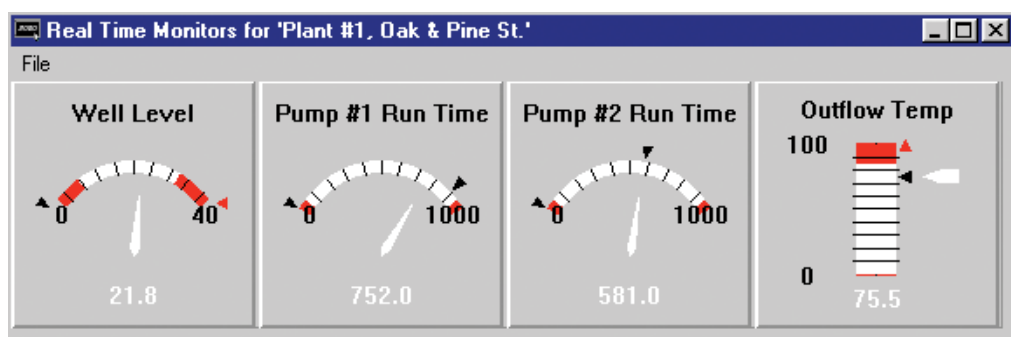
MONITORS 8 DIGITAL OR ANALOG INPUTS

Sensaphone 2000 allows you to select up to 8 inputs—digital or analog—to monitor conditions such as room temperature, outside temperature, power supply, humidity, tank levels, tank temperature, pressure, flow rates, flooding, HVAC controllers, etc. When there's a problem, it alerts you immediately. Whatever you need to know, Sensaphone 2000 can tell you. You can program ranges to suit your specific monitoring requirements, and all

programming can be done locally or from virtually any remote location. Digital functions include open/closed dry contact input and/or pulse counting. Analog can be read as a percentage or via a user-defined lookup table.

COMMUNICATES WITH UP TO 32 PRESELECTED DESTINATIONS

The Sensaphone 2000 Remote Monitoring System offers an amazing array of communication options. Using voice messages you record, it calls and reports to as many as 32 different phone numbers; and it selects differ-



How A Sensaphone 2000 works

Sensaphone 2000 monitors unattended or remote facilities and provides immediate access to vital process information, trending and alarm reporting.

1. MONITORS VIA YOUR INPUTS

You can define as many as eight

- Flow rates
- Tank Level
- Humidity
- Power Supply
- HVAC Controllers
- Flooding
- Fire Alarms
- Pressures
- Temperatures

2. COMMUNICATES VIA

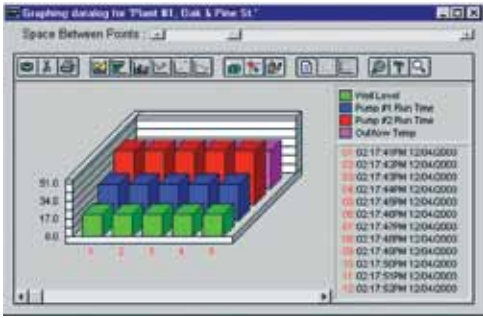
- Phone
- Fax
- Pager
- E-Mail
- Computer
- Web Page

3. LOGS & REPORTS ACTIVITY

Via fax or e-mail. Programmable sampling time and report delivery time allow the unit to be customized to your specific needs. Up to 32,000 records can be stored. In addition to the eight inputs, AC power status and battery voltage may also be logged or reported.



ent numbers to call based on a schedule you create. It can send alarm information directly to your PC. If the programmed phone number is a fax, it will compose and send a fax report.



Colorful charts, gauges, graphs and web pages bring the data to life.

To pagers and beepers it sends the appropriate alarm information. When used in combination with the Manager 2000 software program, the Sensaphone 2000 is also sophisticated and versatile enough to send messages to e-mail addresses, or to assemble report data into a web page, which it then posts to your website. Use Sensaphone 2000's various methods of communication to send regular reports and/or

transmit alarm messages. The system's versatility makes it quick and easy to reach the right people, and that's especially important in an emergency.

Sensaphone 2000 can easily be programmed to send the preselected information or alarm messages to whatever destination you choose.

IMMEDIATE ACCESS TO VITAL PROCESS INFORMATION

All it takes is a phone call to receive a voice status report or a data connection for more detailed information. You can check on any site and access critical information at any time from anywhere. The knowledge you need is always just a phone call away.

BUILT-IN DATA LOGGER

With its internal data logging features, Sensaphone 2000 allows you to log activity such as trends, usage and other factors. It can store as many as 32,000 time-stamped records for verifying activity and charting trends over long periods.

All data is stored in the system's nonvolatile memory, protecting data even during loss of both AC and battery power.

BACKED BY ALL THE SUPPORT AND EXPERTISE OF SENSAPHONE

Sensaphone is a pioneer in the design and manufacture of remote monitoring systems. We continue to be at the forefront, setting industry standards for technical innovation.

With an installed base of more than 300,000 Sensaphone products—from small models to sophisticated industrial systems—Sensaphone prides itself on providing flexibility and features at an affordable price.

Your Sensaphone 2000 comes with responsive technical support and a comprehensive warranty.

Contact the Sensaphone Sales Department for further details at 610-558-2700, or visit our website at www.sensaphone.com

Sensaphone 2000 software

User-friendly software makes the Sensaphone 2000 easy to program and easy to use, from any local or remote PC. Use this flexible software to view input activity in real time, to analyze and graph stored data, and even to process incoming alarms. The software includes these important features:

- Easy point-and-click programming.
- Real-time graphics screen.
- Wide range of report options, generated at times you've specified.
- Allows you to create web pages that update at scheduled times.
- Allows you to view data log information in a grid, or plot it using 3D charts and graphs.
- Lets you maintain multiple Sensaphone 2000 units to a centralized PC.
- Enables you to receive and process alarms from multiple units.
- Automatic Web Page generation.

Choose any combination of communication methods for Sensaphone 2000 to send its reports or alarm messages.

Real-time or stored data can be displayed.

SPECIFICATIONS

DIALING PARAMETERS:

Programmable call list for each input
Alarm acknowledgment:
Touch tones, callback, or modem
Call progress monitoring:
Detect dial tone, busy signals & ringback
Programmable time between calls:
30 seconds to 60 minutes

DESTINATIONS:

32 destinations
36-digit telephone numbers
64 character e-mail addresses

INPUTS:

8 Universal Inputs & 1 AC Power:
Normally Open / Normally
closed dry contact
2.8K / 10K thermistor
4-20mA current loop or 0-5V analog voltage
10 bit resolution

COMMUNICATION TYPES:

Voice, fax, modem, e-mail, numeric
pager, alphanumeric pager, web page

SPEECH TECHNOLOGY:

User-recordable voice for eight input
alarm messages and one ID message

DATA LOGGING:

Up to 32,000 samples (all sam-
ples include date and time)
1 second to 200 hour sampling rate
User programmable
channel selection—inputs 1-8
AC power & battery backup

COMMUNICATION PORTS:

RS232 programming port
Used for local programming & setup
DB9 female DCE
38,400 bps

BUILT-IN DATA MODEM:

Data throughput 14,400 bps
14,400 bps Fax
Protocols: V.32bis, V.32, V.22bis,
V.22A/B, V.23, V.21, Bell 212A & 103

RELAY OUTPUT

1 Form-C Normally Open/
Normally Closed Relay
Rating: 1 Amp 30VAC/24VDC

LOCAL INDICATORS:

Inputs 1-8 Alarm Status LEDs
System On LED
Power Alarm LED
Phone LED
Battery OK LED
Output LED

POWER REQUIREMENTS:

120VAC 60Hz (Standard),
120/220VAC 50/60Hz(International version)
10 hr SLA Rechargeable battery included
Operating Temperature Range:
0° to 50°C (32° to 122°F)

HUMIDITY:

0-90% RH, non-condensing

SIZE:

12.1" w x 7.2" h x 1.6" d

SHIPPING WEIGHT:

3 lbs.

SERIAL TO ETHERNET ADAPTER:

Allows you to access your Sensaphone 2000
anywhere on a local LAN or the Internet.
RJ45 10/100 Mbps
Sensaphone Part # FGD-0300



Specifications subject to change without notice.

Distributed By:

SENSAPHONE®
901 Tryens Road
Aston, PA 19014
PH: 610-558-2700
F: 610-558-0222
www.sensaphone.com